

# Marine Emergency Team 26



**GUARDIANS OF THE CHESAPEAKE**

DIVISION OF NORTH POINT- EDGEMERE  
VOLUNTEER FIRE DEPARTMENT

[marineteam26@npevfd26.org](mailto:marineteam26@npevfd26.org)  
[www.npevfd26.org](http://www.npevfd26.org)





# Marine Emergency Team 26

## North Point- Edgemere Volunteer Fire Department

7500 North Point Road, Sparrows Point, Maryland 21219  
410-887-7554 [www.npevfd26.org](http://www.npevfd26.org)

---

4-30-2024

Dear business and community partner,

Since the early 1980s, the North Point -Edgemere VFD has been providing maritime incident response to Baltimore County and surrounding areas of the Upper Chesapeake Bay. Our primary jurisdiction encompasses over 84 square miles of open water and 135 miles of shoreline, not including our mutual aid assistance to Maryland counties such as Anne Arundel, Baltimore City, Harford, Kent, and Queen Anne's.

Today North Point Edgemere has one of two Marine Emergency Teams for Baltimore County. Dubbed Marine Emergency Team 26, we provide open water fire, EMS, and search and rescue along with a rescue swimmer program, ice rescue, and flood response. Our units often assist other agencies, such as Baltimore County Police, the Maryland Department of Natural Resources, the Maryland Department of Environment, and the U.S. Coast Guard. Marine Emergency Team 26 (the Team) is a 100% volunteer and dedicated team. Fundraising efforts throughout our community and business partners similar to yours support our team.

Marine Emergency Team 26 currently operates two open-water rescue vessels, 1 inflatable, 1 flood response boat, and one ice rescue device. According to the Port Wide Risk Management Plan, "The ideal vessel would be a Metal Craft Marine Firestorm 36 or equivalent". The Marine Emergency Team currently operates a 2008 26-foot vessel and a 2016 23.5-foot vessel. Both of these vessels are well under the industry-recommended expectation of a first responder vessel. With the continual increase in marine traffic and the changes in weather, these vessels are not meeting the expectations or requirements of providing the most efficient, timely, or safe response to the incidents we are responding to. The Marine Emergency Team expects to provide the best service to our community while ensuring the safety of our responders. Our team understands the importance of being available when the call is received and the understanding that we may be the only option to ensure that someone goes home safe after enjoying the beauty of the Chesapeake Bay.

The time is now to make sure that our Team can continue to provide and enhance our service to our community. When disaster strikes we need to be 100% confident that we can mitigate the incident safely and effectively. Unfortunately, funding is always the topic of discussion. The North Point- Edgemere VFD does not only provide maritime response, we are a full-service fire rescue and EMS department, our Department must maintain and sustain two fire engines, a heavy rescue, an emergency medical response vehicle, a special services unit, and a brush truck in addition to the maritime response equipment. This year so far we have one of our fire engines, a 2007, that is currently being refurbished to meet today's standards, this project is expected to total \$150,000. In December of 2023, it was determined that our special services unit, which responds to medical emergencies, marine incidents, and other various incidents, was no longer in compliance with the National Fire Protection Association guidelines for front-line emergency response, the 2002 Ford Excursion, was replaced with a 2023 Chevrolet Pick Up, this vehicle after being upfitted, will cost \$100,000. These are all costs that are incurred by our department, with funding from our community.

Unfortunately, Baltimore County does not provide much funding assistance when it comes to the marine emergency team. While they may assist with the reimbursement of some of the equipment, fuel, and personal protection equipment, they do not directly support any capital project or maintenance. The Marine Emergency Team has identified the risk being taken utilizing the current vessels may not be providing the safest, reliable, or effective response. The Team has deemed it necessary to begin the process of replacing at least one of our two current vessels. The capital campaign will require the fundraising of at least 850- 1.2 million dollars. The Team is currently working on identifying the manufacturer for the project and expects to procure at minimum a 32-foot all hazards response vessel, capable of providing a safe and effective response to our area of responsibility even on the worst

---

IGNITE YOUR POTENTIAL — JOIN TODAY



## Marine Emergency Team 26

### North Point- Edgemere Volunteer Fire Department

7500 North Point Road, Sparrows Point, Maryland 21219  
410-887-7554 [www.npevfd26.org](http://www.npevfd26.org)

---

days.

Since the events at the Key Bridge, the replacement of our vessel has gained traction, not only internally but from our community and business stakeholders and partners. The capital campaign has started with the goal of identifying, procuring, and receiving a state-of-the-art vessel before the end of 2026. However, we can not do this without the continuing support of our partners like you.

While our focus is to meet our above goal and to steadfast the capital campaign, we understand that some may have financial burdens or other restrictions. There are other ways to support our Marine Emergency Team or our Department outside the contributions to our capital campaign. We would love to discuss these options with you as needed.

Attached we have included two documents that outline a little about our Marine Emergency Team. If you have any questions feel free to reach out to our team at the below contact information. We look forward to working with you and your team and hope that we can continue to work together for the success of our Team.

Respectfully,

Joseph P. Walters, III  
Assistant Chief  
443-845-2191  
[joe.walters@npevfd26.org](mailto:joe.walters@npevfd26.org)



# About Us

*"Guardians of the Chesapeake"*

The Marine Emergency Team 26 is a division of the North Point-Edgemere Volunteer Fire Department, a registered 501(c)(3) non-profit organization.

## Contact Us Right Now

### Fire Station

7500 North Point Road

### Email

met26@npevfd26.org

### Website

www.npevfd26.org

www.npevfd26.org

**NORTH POINT-EDGEMERE VFD**

## MARINE EMERGENCY TEAM



VHF Channel 16 | 911 | Call: 410-887-5774

# Area of Responsibility

- The MET provides maritime incident response to 84 square miles of the Chesapeake Bay and its tributaries and services over 173 miles of shoreline.

# Hazards within our AOR

Residential Homes | State Park Land |  
Tradeport Atlantic | Dundalk Seagirt/  
Port of Baltimore | Key Bridge | CSX  
Amtrak Bridges | Pleasure Island | Hart-  
Miller Island | Pooles Island | Brewerton  
Channel | Tolchester Channel |  
Aberdeen Proving Grounds |  
Thousands of Commerical and  
Recreational Traffic

# What We Do

Maritime Firefighting

Emergency Medical

Search & Rescue

Technical Ops  
Ice, Surface, Flood

Assist Allied Agencies



[www.npevfd26.org](http://www.npevfd26.org)

# NORTH POINT- EDGEMERE VFD MARINE EMERGENCY TEAM

---





## MARINE EMERGENCY TEAM 26

North Point- Edgemere Vol Fire Department

The Marine Emergency Team is a division of the North Point Edgemere VFD. We are one of two teams in Baltimore County, which specialize in Open Water Rescue Operations, including, Search & Rescue Operations, Vessel Fire, Land Based Fire, EMS, Ice Rescue, Surface Water Operations, Rescue Swimmer, Flood Water.

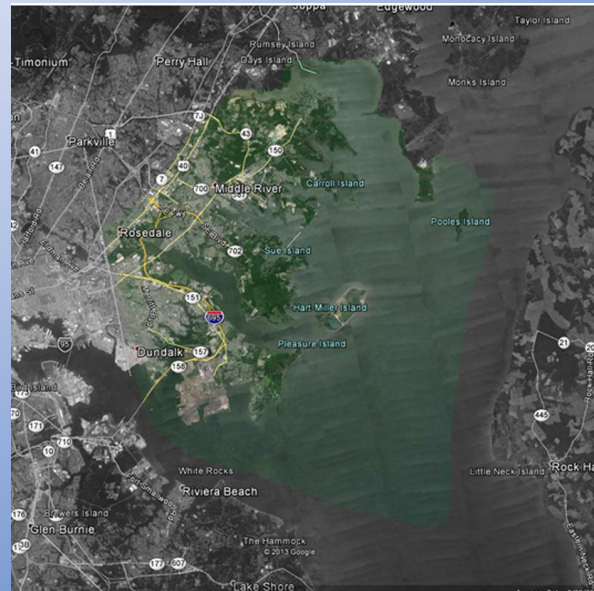


# MARINE EMERGENCY TEAM 26

North Point- Edgemere Vol Fire Department

Our primary Area of Responsibility includes

- **83.44 Square Miles of Water**
- **173 Square Miles of Shoreline**







## MARINE EMERGENCY TEAM 26

North Point- Edgemere Vol Fire Department

Our secondary Area of Responsibility includes

**Baltimore City, Anne Arundel County,  
Kent County, Harford County &  
Queen Anne's County**



# MARINE EMERGENCY TEAM 26

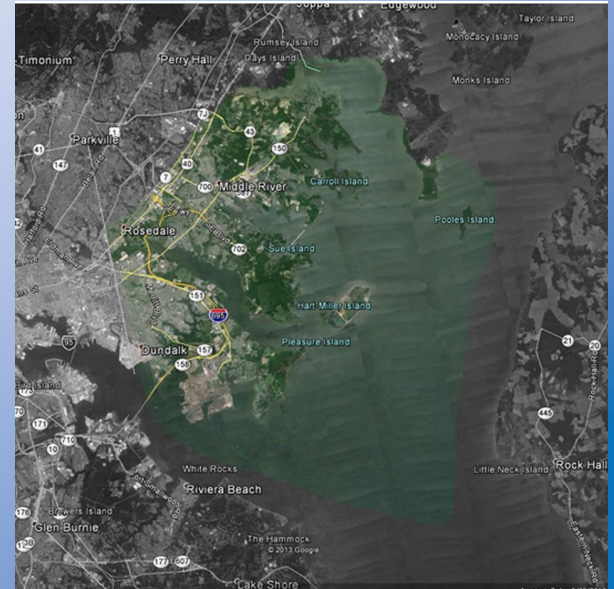
North Point- Edgemere Vol Fire Department

## Our Primary Area of Responsibility includes

- Hundreds of Waterfront homes
- Several Square Miles of State Park Land
  - Dundalk Seagirt Terminal
  - Tradepoint Atlantic Property
    - Fort Howard

**Key Bridge/ 695, Peninsula HWY, Bear Creek Bridges**

- CSX/AMTRAK Gunpower Bridge
  - Pleasure Island
  - Hart-Miller Island
  - Pooles Island
  - Bwertown Channel
  - Tolchester Channel
  - APG Restricted Zones
  - Many marinas/restaurants





# MARINE EMERGENCY TEAM 26

North Point- Edgemere Vol Fire Department

## Current Fleet

- Builder:** Decklemans' Love Cove Marina- Rock Hall  
**Year:** 2008  
**Length:** 26'  
**Beam:** 9'  
**Draft:** 18 Inches (Eng. Trim) 30 in (Eng Down)  
**Hull:** ¼" thick 5086 Marine Alum.  
**Crew:** Min 2  
**Power:** Single Merc 400 HP  
**Fire Cap:** 500 GPM @100 PSI, Two 2 ½" Discharges,  
Darley/Hercules  
**Electronics:** Garmin Multifunction  
**Location:** Currently stationed at Bills Boats, Millers Island



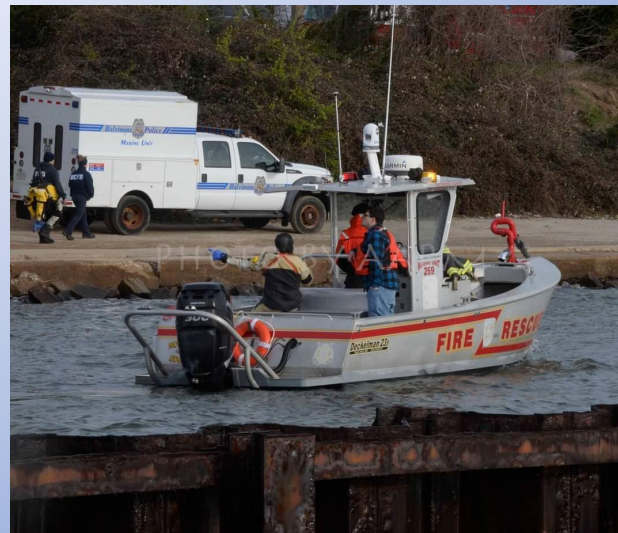


# MARINE EMERGENCY TEAM 26

North Point- Edgemere Vol Fire Department

## Current Fleet

- Builder:** Decklemans' Love Cove Marina- Rock Hall  
**Year:** 2016  
**Length:** 23.5'  
**Beam:** 8'6"  
**Draft:** 18 Inches (Eng. Trim) 30 in (Eng Down)  
**Hull:** ¼" thick 5086 Marine Alum.  
**Crew:** Min 2  
**Power:** Single Merc 300 HP  
**Fire Cap:** 500 GPM @150 PSI, Two 2 ½" Discharges,  
Darley/Hercules  
**Electronics:** Garmin Multifunction  
**Location:** Currently stationed at Gonce Marina





# MARINE EMERGENCY TEAM 26

North Point- Edgemere Vol Fire Department

## Future Planning

**32-34 Foot All Hazards Purpose Build Fire/Rescue Vessel**

**Appx Cost: \$850,000 to \$1.1 Mil**





## MARINE EMERGENCY TEAM 26

---

North Point- Edgemere Vol Fire Department

### Additional Information about NPEVFD

**The NPEVFD is also responsible for Fire Suppression, Rescue Operations and Emergency Medical Services on land.**

**We are currently undergoing two major apparatus projects.**

- 1. \$100,000 Special Unit**
- 2. \$150,000 Fire Engine Refurbishment**

**Other capital projects within a research phase,  
Replacement of a 2006 Brush truck, replacement with a UTV**

**Addition of a Specialized Ventilation Vehicle**

**Marine Support Trailer**

**Shallow Water Draft Vessel**

**Flood Response High Water Vehicle**

**New Pier Location**